

# APCE WELCOMES YOU TO THE 2011 ANNUAL EVENT

The Southwest awaits you. Come immerse yourself in the rich cultural heritage, rooted in centuries of history. Soak in the blue skies and bright sunshine. Breathe in the high desert air scented with sage and pinion and you will understand why Albuquerque is a destination like no other. Albuquerque—it's a trip you'll never forget!

More exciting news: we are going paperless! Conference books will not be mailed but available to download in September.

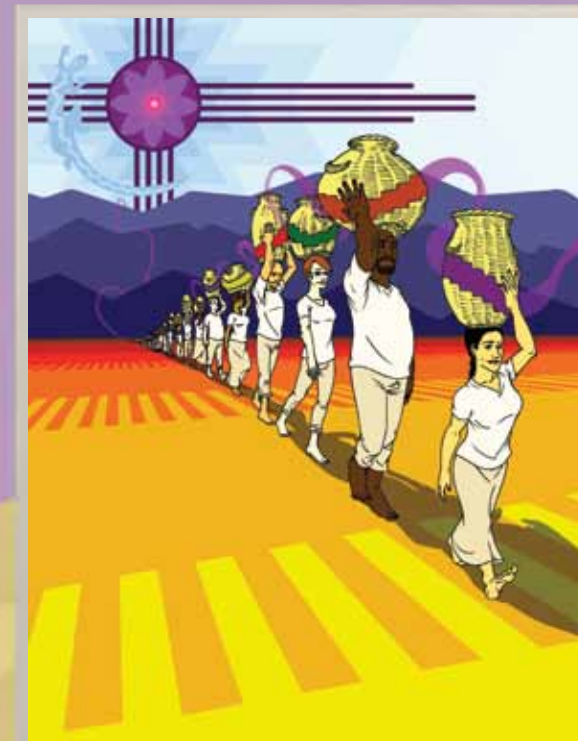
Also early bird online registration will be accessible September 1.



Presbyterian Church (U.S.A.)  
100 Witherspoon Street  
Louisville, KY 40202-1396

# WALKING IN BALANCE

ALBUQUERQUE, NEW MEXICO  
FEBRUARY 2-5, 2011



# A.P.C.E.

2011 ANNUAL EVENT

[apcenet.org](http://apcenet.org)

# ASSOCIATION OF PRESBYTERIAN CHURCH EDUCATORS

## CONFERENCE SPEAKER

Rick Ufford-Chase and his wife, Kitty, are the co-directors of Stony Point Center. Together, with rabbi Lynn Gottlieb and Muslim chaplain Rabia Harris, they established the Community of Living Traditions, a multi-faith, residential community at Stony Point Center dedicated to the study and practice of nonviolence and peace. Rick is also the executive director of the Presbyterian Peace Fellowship. He served as Moderator of the 216th General Assembly of the PC(USA) from 2004 to 2006.



## CONFERENCE MUSIC DIRECTOR

Rev. Corey Nelson is currently the associate pastor for mission at the First Presbyterian Church of Lake Forest, Illinois. A former high school music director, Corey then served as a Young Adult Volunteer in Belfast, Northern Ireland, and in Ghana. For several years following that, he worked on the General Assembly staff in World Mission as a mission educator, speaker, and worship leader. Corey founded the Thuma Mina Mission Theatre Company and the Global Worship Initiative, which he directed for six years before moving on to serve in the local church.



**Multiple scholarships available**  
Go to [apcenet.org](http://apcenet.org)

## TRAVEL

### Airport Information

Albuquerque International Sunport (ABQ), New Mexico's largest airport, serves as the gateway to the diverse cultures, rich history and breathtaking landscape that makes New Mexico unique and beautiful. The airport serves seven airlines operating from two concourses. Baggage Claim and Ground Transportation are on Level 1.

Please allow plenty of check-in time; we suggest at least two hours.

## CONFERENCE

### OPTIONS:

- PYWA
- Large Church Gathering
- Ghost Ranch Overnight
- Seminars
- Certification Courses

## DENOMINATIONAL

### PARTNERS:

- Christian Reformed Church in North America
- Presbyterian Church (U.S.A.)
- Moravian Church in America
- The Presbyterian Church in Canada
- Reformed Church in America

## Hotel Reservations

*Hyatt Regency Hotel*  
330 Tijeras Ave. NW  
Albuquerque,  
NM 87102  
505-842-1234  
800-233-1234

\$137 single/double  
\$162 triple  
\$187 quad

Parking  
\$12 self parking  
\$16 valet

*Doubletree Hotel*  
201 Marquette NW  
Albuquerque,  
NM 87102  
505-247-3344  
800-222-8733

\$136 single/double  
\$159 triple/quad

Parking  
\$10 per day

*Embassy Suites Hotel*  
1000 Woodward Pl. NE  
Albuquerque,  
NM 87102  
505-245-7100  
800-362-2779

\$159 single/double  
\$169 triple  
\$179 quad

Free parking; shuttle service available

Hotel rates do not include tax (currently 12.875%; subject to change).

For reservations, call the Hyatt Regency, Doubletree or Embassy Suites or go online at [apcenet.org](http://apcenet.org). Be sure to indicate that you are with the Association of Presbyterian Church Educators (APCE) in order to receive the special conference rates.

Hotel reservations made after January 10, 2011 will be granted at the conference rate only on a space available basis.

